

TYPICAL TRACKER SECTION



LEGEND:

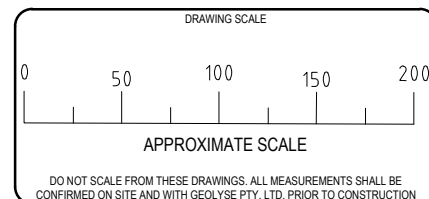
- OH OVERHEAD POWERLINES
- SOLAR ARRAY BANK PERIMETER
- INTERNAL ACCESS GRAVEL ROAD EDGE
- INDICATIVE VEGETATION PLANTINGS (SEE IRIS LANDSCAPE PLANS FOR DETAILS)
- ASSET PROTECTION ZONE
- INVERTER STATION
- 20M WIDE RIPARIAN ZONE

STRUCTURAL, CIVIL, PLANNING, SURVEYING,
ARCHITECTURE & ENVIRONMENTAL

154 PEISLEY STREET
P.O. BOX 1963
ORANGE, NSW 2800
Ph. (02) 6393 5000
Fx. (02) 6393 5050

Premise www.premise.com.au

REV.	DATE	DFTD.	APPD.	DETAILS
A	30/10/19	GT	DW	ISSUE FOR REVIEW
B	09/12/19	GT	DW	ISSUE FOR REVIEW
C	12/12/19	GT	DW	ISSUE FOR REVIEW-AMENDED AS PER PTS1-4 REQUEST
D	13/12/19	GT	DW	ISSUE FOR REVIEW-AMENDED AS PER REQUEST
E	19/02/20	GT	DW	ISSUE FOR REVIEW-RIPARIAN ZONE ADDED AND SHEET TP02
F	24/02/20	GT	DW	ISSUE FOR REVIEW-VAR DISTANCE AMENDED SHEET TP02



APPROVAL AUTHORITIES

Wagga Wagga City Council

Southern Joint Regional Planning Panel

CLIENT

METKA EGN

PROJECT

WAGGA WAGGA SOLAR FARM SOUTH

DRAWING WAGGA WAGGA SOUTH SOLAR FARM SITE CONCEPT LAYOUT

PROJECT NUMBER 220188	DRAWING FILE 220188_02F_TP01-TP02.dwg	ORIGINAL A3
DATA SOURCE -		SET 02F
IMAGE SOURCE -		
STATUS FOR APPROVAL	SHEET TP01 OF TP02	

LEGEND

HOST LOT

DEVELOPMENT SITE

CADASTRAL BOUNDARIES

MAPPED WATERWAYS

FARM DAMS

GROUNDWATER BORES

INDICATIVE WATER LINE LOCATION

POWERLINES

UNRELATED RESIDENTIAL RECEIVERS

RELATED RECEIVER

VEGETATION

PCT 277 PLANTED

PCT 277 WOODLAND (BOX GUM WOODLAND)

HOLLOW BEARING TREES

ABORIGINAL SITES

ISOLATED ARTEFACTS

ARTEFACT SCATTERS

SUBSURFACE ARTEFACTS

DD ARTEFACT SCATTERS

Premise

ORANGE

154 PEISLEY STREET

P.O. BOX 1963

ORANGE NSW 2800

orange@premise.com.au

www.premise.com.au

154 PEISLEY STREET

P.O. BOX 1963

ORANGE NSW 2800

Ph. (02) 6393 5000

Fx. (02) 6393 5050

GIS PROJECT DETAILS

Datum: GDA 2020 MGA Zone 55 (EPSG: 7855)

Project Number: 220188

Directory: O:\Projects\220\220188\Out\GIS\220188.qgs

Data Source: NearMap (Imagery) and NSW Spatial Services (Cadastre)

DRAWING SCALE

0 150 300 450 m

A3

APPROVAL AUTHORITY

SOUTHERN REGIONAL PLANNING PANEL

CLIENT

METKA

PROJECT

WAGGA WAGGA SOLAR FARM SOUTH

DRAWING

Name: SITE ANALYSIS PLAN

Reference: 220188_01A_TP01

Sheet: TP01

Status: FOR APPROVAL

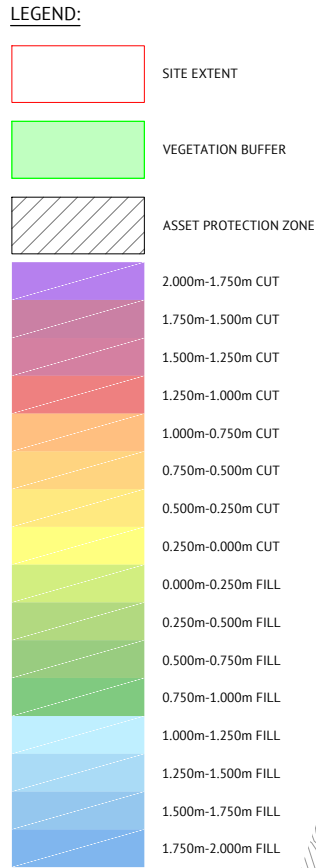
Date: 09/01/2020

©2019. Whilst every care has been taken to prepare this map, Premise Pty Ltd makes no representations or warranties about its accuracy, reliability, completeness or suitability for any particular purpose and cannot accept liability and responsibility of any kind (whether in contract, tort or otherwise) for any expenses, losses, damaged and/or costs (including indirect or consequential damage) which are or may be incurred by any party as a result of the map being inaccurate, incomplete or unsuitable in any way and for any reason.

NOTES:

1. THIS CONCEPT PLAN IS PREPARED FROM A FIELD SURVEY FOR THE PURPOSE OF DESIGNING NEW CONSTRUCTIONS ON THE LAND. UNDER NO CIRCUMSTANCES SHALL THIS PLAN BE USED FOR CONSTRUCTION.

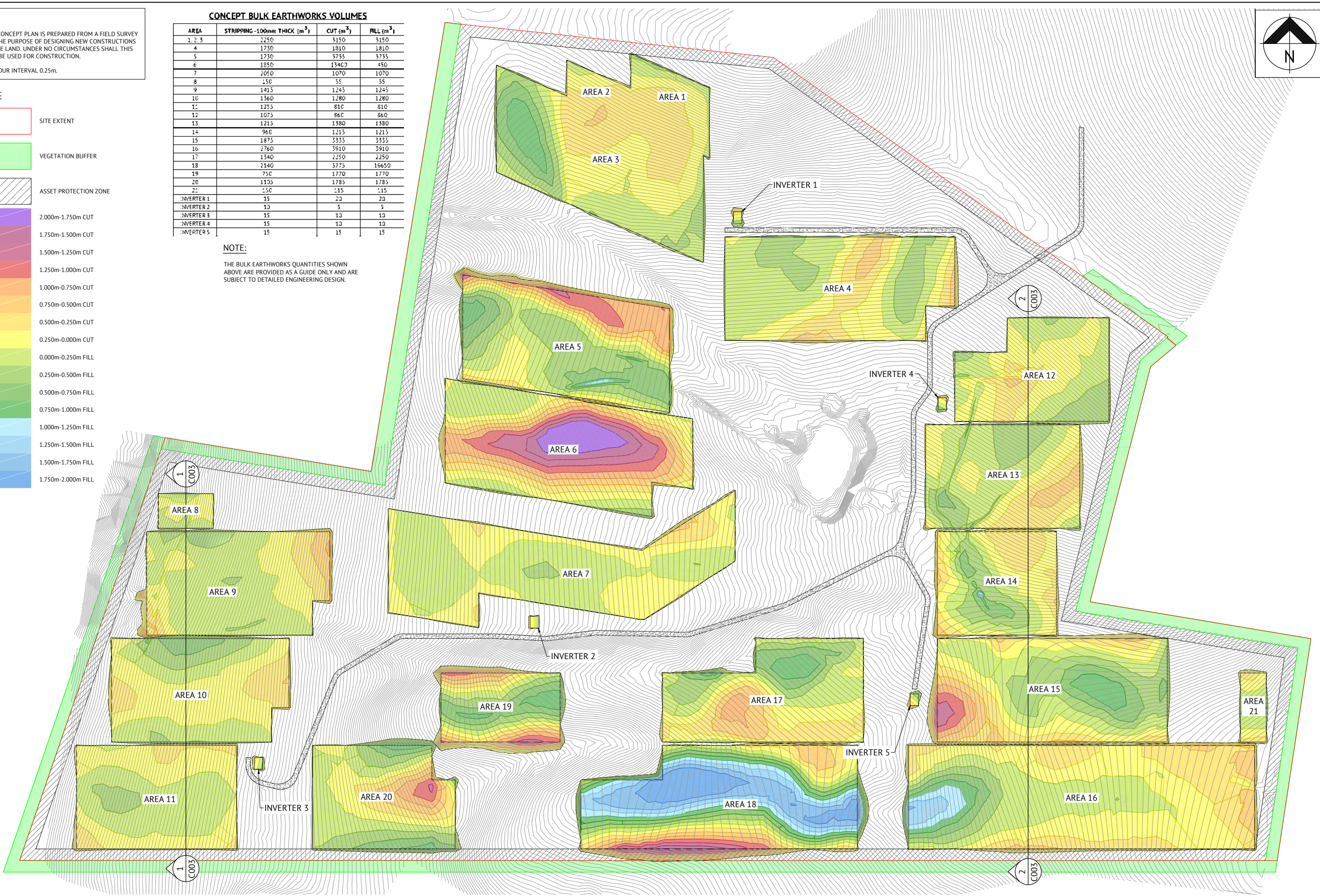
2. CONTOUR INTERVAL 0.25m.



CONCEPT BULK EARTHWORKS VOLUMES			
AREA	STRIPPING -100mm THICK (m ³)	CUT (m ³)	FILL (m ³)
1, 2, 3	2250	3150	3150
4	1730	1810	1810
5	1730	3735	3735
6	1850	1340	450
7	2050	1070	1070
8	150	55	55
9	1415	1245	1245
10	1360	1280	1280
11	1255	810	810
12	1075	860	860
13	1215	1380	1380
14	960	1215	1215
15	1875	3335	3335
16	2760	3910	3910
17	1340	2250	2250
18	2140	3775	16650
19	750	1770	1770
20	1105	1785	1785
21	150	115	115
INVERTER 1	15	20	20
INVERTER 2	10	5	5
INVERTER 3	15	10	10
INVERTER 4	15	10	10
INVERTER 5	15	15	15

NOTE:

THE BULK EARTHWORKS QUANTITIES SHOWN ABOVE ARE PROVIDED AS A GUIDE ONLY AND ARE SUBJECT TO DETAILED ENGINEERING DESIGN.



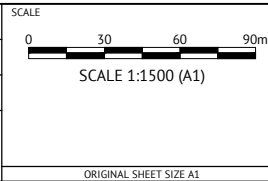
CONCEPT PLAN - ISSUED FOR REVIEW

DATE	REV	DESCRIPTION	AID REC	DW APP
06/11/2019	A	CONCEPT PLAN - ISSUED FOR REVIEW		



ORANGE OFFICE
154 PEISLEY STREET
ORANGE, NSW 2800
PH: (02) 6393 5000
WEB: www.premise.com.au

DESIGNED
AID
CHECKED
DW
PROJECT MANAGER
DW
ENGINEERING CERTIFICATION



CLIENT
TERRAIN SOLAR

PROJECT
WAGGA NORTH SOLAR FARM - STAGE 2

LOCATION
WAGGA, NEW SOUTH WALES

SHEET TITLE
CONCEPT BULK EARTHWORKS PLAN

JOB CODE
217452_03

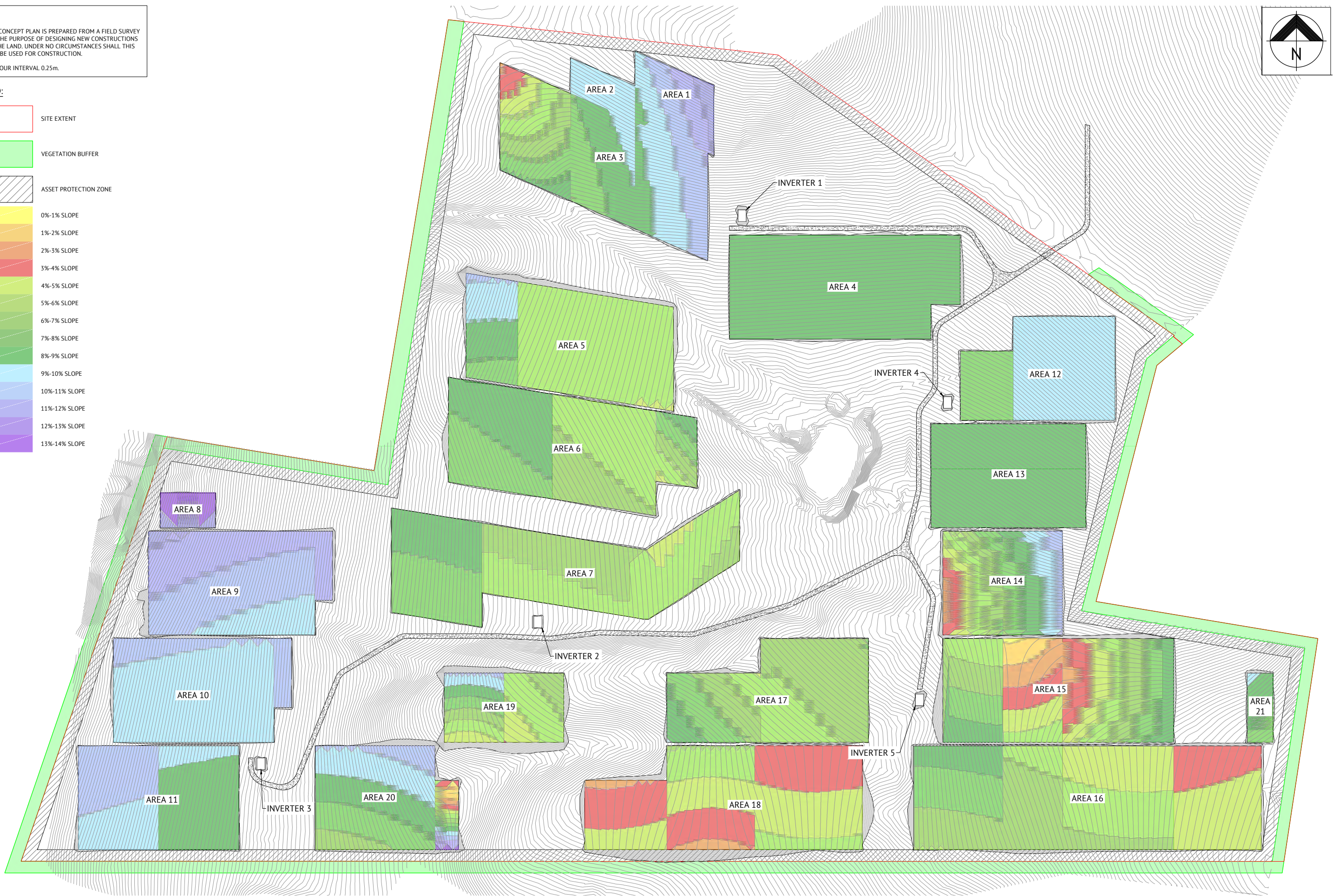
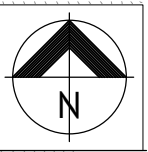
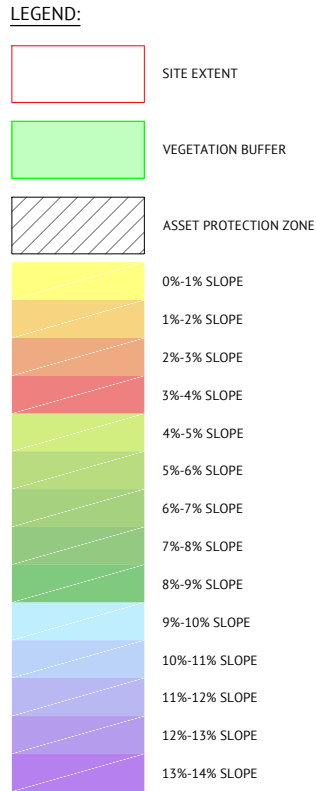
SHEET NUMBER
C001

REV
A

NOTES:

1. THIS CONCEPT PLAN IS PREPARED FROM A FIELD SURVEY FOR THE PURPOSE OF DESIGNING NEW CONSTRUCTIONS ON THE LAND. UNDER NO CIRCUMSTANCES SHALL THIS PLAN BE USED FOR CONSTRUCTION.

2. CONTOUR INTERVAL 0.25m.



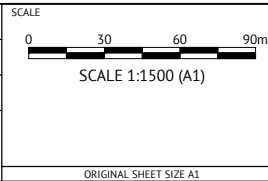
CONCEPT PLAN - ISSUED FOR REVIEW

DATE	REV	DESCRIPTION	AID REC	DW APP
06/11/2019	A	CONCEPT PLAN - ISSUED FOR REVIEW		
REVISIONS				



ORANGE OFFICE
154 PEISLEY STREET
ORANGE, NSW 2800
PH: (02) 6393 5000
WEB: www.premise.com.au

DESIGNED
AID
CHECKED
DW
PROJECT MANAGER
DW
ENGINEERING CERTIFICATION



CLIENT
TERRAIN SOLAR

PROJECT
WAGGA NORTH SOLAR FARM - STAGE 2

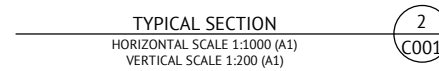
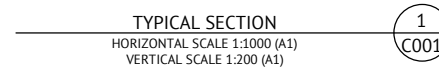
LOCATION
WAGGA, NEW SOUTH WALES

SHEET TITLE
CONCEPT SLOPE ANALYSIS PLAN

JOB CODE
217452_03

SHEET NUMBER
C002

REV
A



JOB CODE	
217452_03	
SHEET NUMBER	REV
C003	A

Wagga Wagga Solar Farm South

Proposed Access and internal roads for Wagga Wagga Solar Farm North and Wagga Wagga Solar Farm South.

Legend

- Wagga Wagga Solar Farm North Roads
- Wagga Wagga Solar Farm South Roads

Access Point from East Bomen Road

Google Earth

Imagery © Department Finance, Services and Innovation 2016




1 km

Wagga Wagga Solar Farm South

Distance from North West Corner of Lot to Proposed Access Point.

Legend

 Wagga Wagga Solar Farm North Roads

390m

Access Point from East Bomen Road

Google Earth

Imagery © Department Finance, Services and Innovation 2016






200 m

Wagga Wagga Solar Farm South

Proposed Access and internal roads for Wagga Wagga Solar Farm North and Wagga Wagga Solar Farm South.

Legend

-  Proposed Access For WWSFS via WWSFN
-  Wagga Wagga Solar Farm North Roads
-  Wagga Wagga Solar Farm South Roads

Access Point from East Bomen Road

Google Earth

Imagery © Department Finance, Services and Innovation 2016



600 m